

PCWIN01

Flash Programmer Utility (Rev.0.8)

User's Manual

•Installation	pag. 2
•Main Function	pag. 2
•Programming Procedure	pag. 3

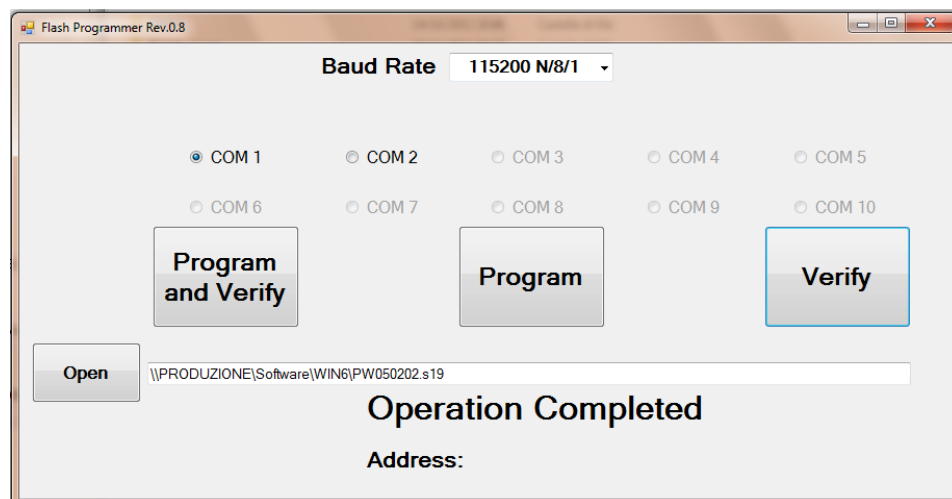
INSTALLATION

Run SETUP.EXE and follow the instructions of the installation procedure.

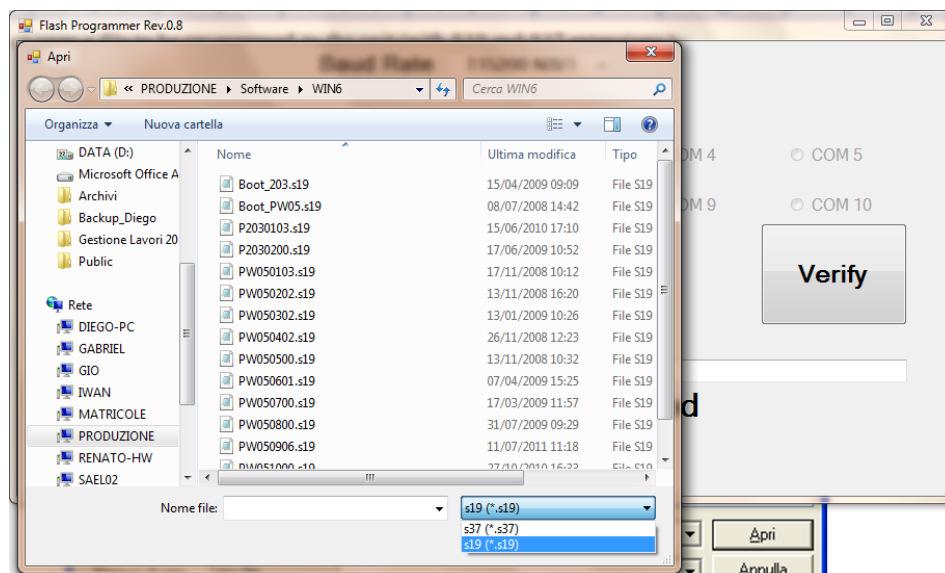
MAIN FUNCTION

Start up the application by selecting START->Programs->Flash Programmer->Programmer

Following main screen will be showed:



Open: let you open a file to be programmed to the unit (with S19 and S37 extensions.)

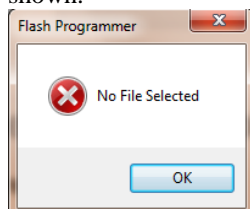


You can select the Host PC's COM port used to connect the unit to be programmed. Numbers from 1 up to 10 are available. It's also possible to select communication parameters and baud rate to 115200 bit/sec or 9600 bit/sec. 115200 bit/sec baud rate is usually preferred, but if RF modems are used, 9600 bit/sec must be selected.

“Program and Verify”, “Program” and “Verify” buttons are used to perform related operations.

“Open” button; use this function to open a file and send it to the unit connected to serial port.

Complete path is showed in the text box. If no file is selected, when window is closed following warning message will be shown.



PROGRAMMING PROCEDURE

Before performing programming procedure, following operations must be done:

- Connect unit to be programmed to the selected PC serial COM port.
- Activate the bootloader procedure on the unit by powering up while pressing appropriate key (refer to the user's manual of the unit).
- Run “Flash Programmer” on the PC.

Programming procedure steps:

1. Select communication port used to connect the unit.
2. Oper firmware file to be programmed by using command Open on File menu, or “Open” button on main window.
3. Run the programming/verifying desired function (enable RF mode if needed):
 1. **Program and verify**: firmware file will be programmed to the unit flash memory and succesful operation will be verified by reading back programmed file (recommended procedure).
 2. **Program**: : firmware file will be programmed to the unit flash memory without verifying it (faster procedure).
 3. **Verify**: shall compare the firmware file with the unit's memory without running the programming procedure.

When program procedure is complete, unit's firmware will be automatically executed.

If you try to run program or verify procedure without having opened a firmware file, following warning message will be displayed.

